



Feedback Fruits – Interactive Video

Student Manual

Teachingsupport@uu.nl

Last edited on: 11-08-2021

1. Log in

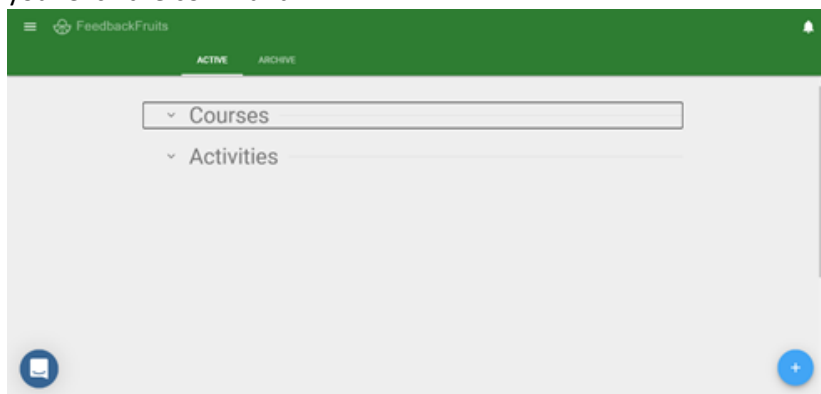
Usually, the link to Feedback Fruits has been made available by the teacher in the blackboard course environment.

If that doesn't work, there's another option.

- Log in to <https://feedbackfruits.com/>
- Go to **log in** and select Utrecht University. You will be redirected to a page where you can log in with your SOLIS-ID. This way you end up in the Feedback Fruits environment.

After you have logged in, you will be taken to the home screen with all the courses to which you have been added by a teacher and the activities in which you participate.

Select the course you want to work on or go directly to the assignment that has been prepared for you. Click the command.




2. Instructions

Once you have opened the Interactive Video command, you will see a preview of the video to be watched. Depending on the assignment, you will also see a number of instructions from the teacher at the top. Read the instructions carefully and then click on 'Start watching' to open the video viewer.





Interactive Video - Group discussion and answering practice questions with grading

UNFOCUS 0


1 Instructions

 Dear students,
For this assignment please:
() Answer all practice questions
() Participate in the discussion I started
() Start discussions where you find it difficult to comprehend or what you find interesting
You will receive a grade for this assignment.
Good luck!

Group assignment
Group A

 Liz Bennett
 Emily Collins
 Ash Fisher
 Karey Star

2 Video

 **START WATCHING**

3. Video Viewer

In the Video Viewer, you can watch the video. The basic functions of the Video Viewer can be found at the bottom and top of the video player. The icons are explained below from left to right.

With 'unfocus' you get a minimized view of the video. If you click on 'view original', you will see the original link of the video. When the assignment is complete, click on 'done'. With the 'thumbs up' you can indicate that the document is useful. With 'the bell' you can enable notifications with the document.



The documents symbol allows you to have subtitles displayed, the speaker symbol allows you to control the volume and the gear symbol allows you to adjust the video speed.

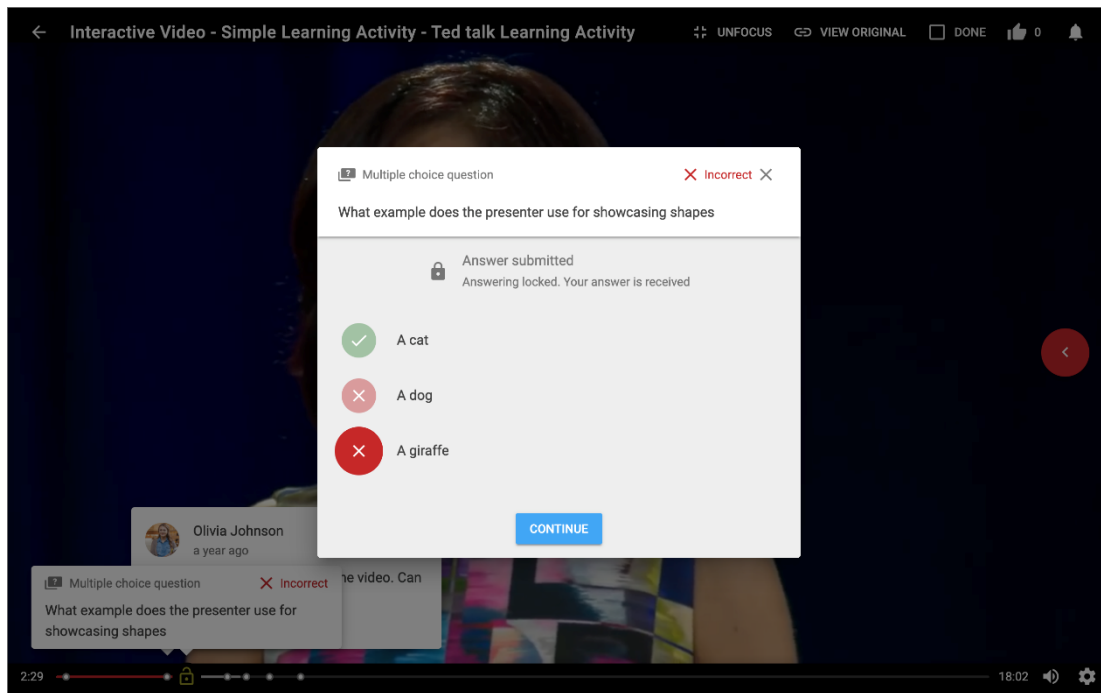


4. Answer and add questions

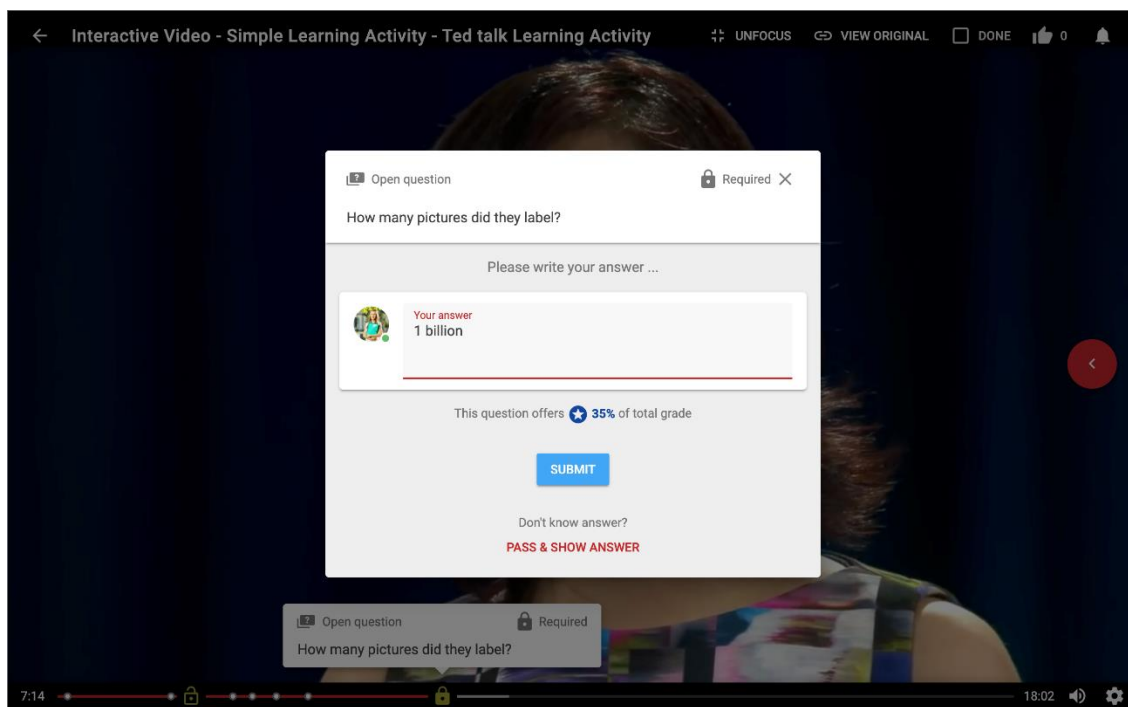
The teacher can add both open questions and multiple-choice questions to the assignment. Some questions are locked, which means you have to answer them first before you can look further. If it is a locked question, then that is indicated in the top right with 'Required' (see also image below).

The locked questions are displayed on the progress bar with a lock. Questions that you can also answer at another time are indicated with a dot.

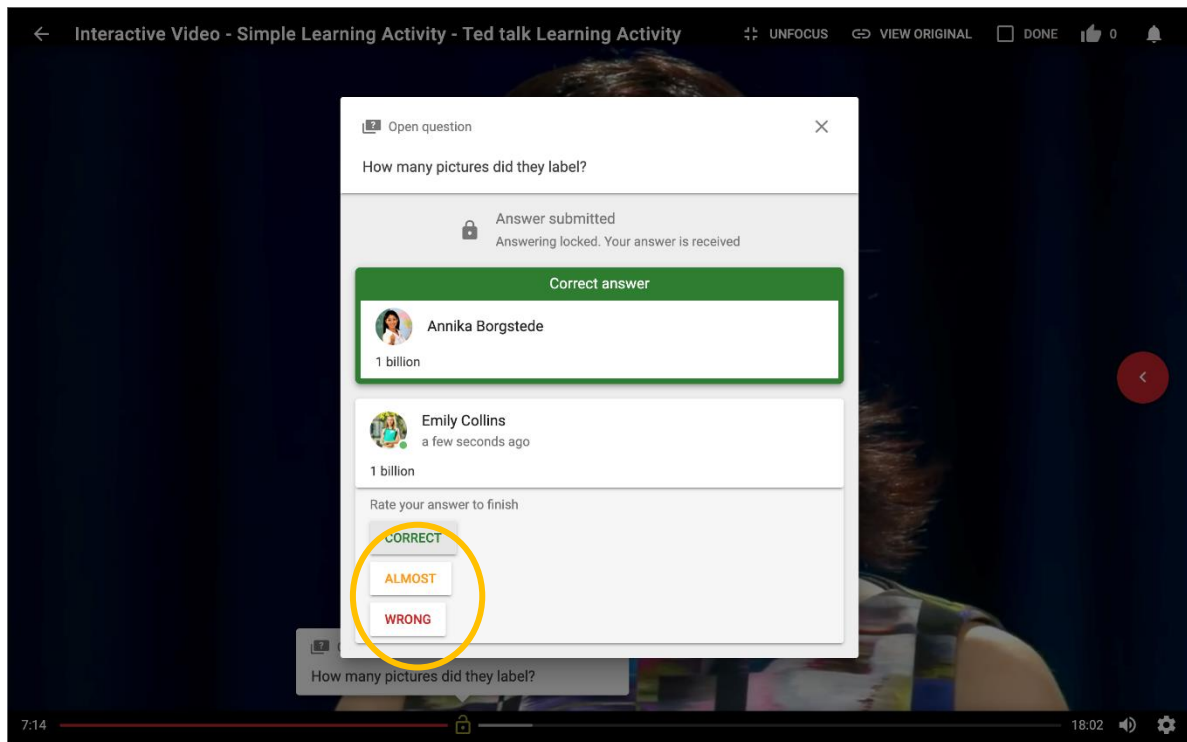
If you've answered a question, you may see the correct answer afterwards (see the image below). You can also view the answers again later by clicking on the question in the progress bar at the bottom.



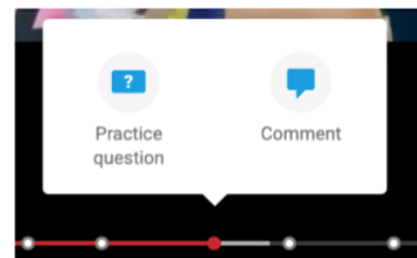
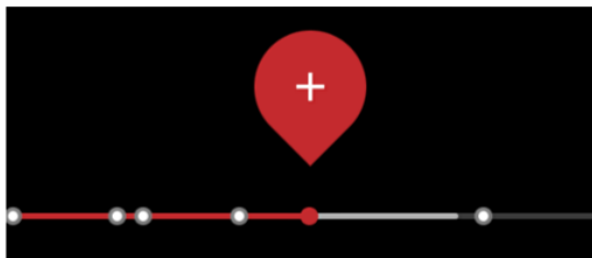
You can also get open-ended questions, such as the question on the image below. If you know the answer to the question, you can formulate it in the text box below. To skip the question and therefore not give an answer, click on 'pass & show answer'. If it is an assignment for which you get a grade, then you see for each question what percentage it counts. In the example below, the question counts for 35% of the figure.



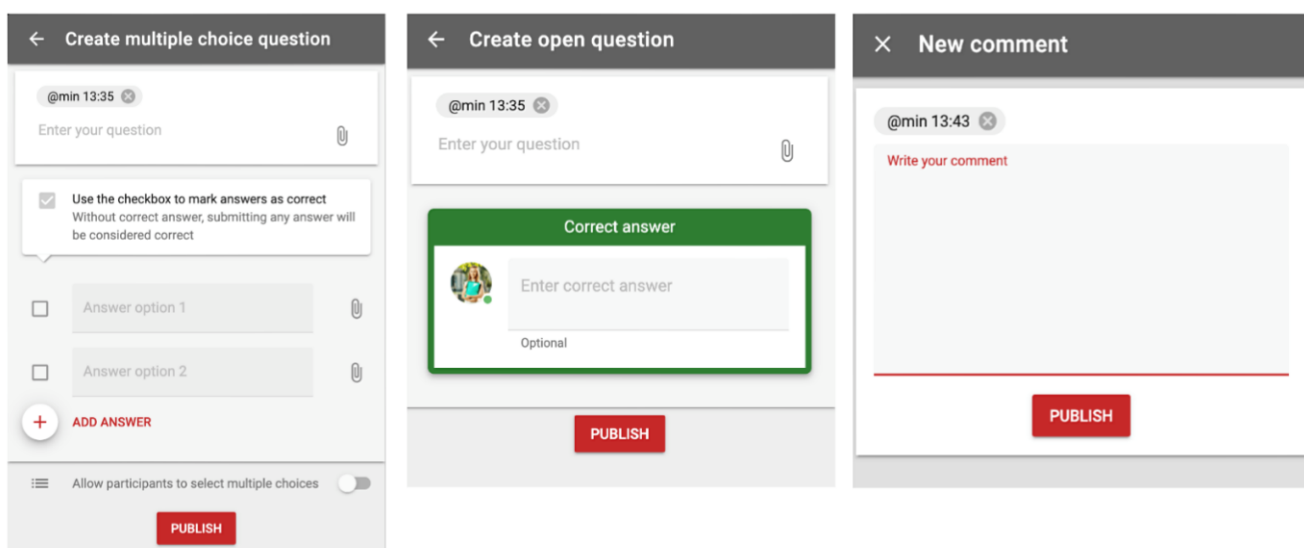
Once you have answered the question, it may be that the correct answer becomes visible, possibly even with answers that other students have filled in. You will then be asked to estimate to what extent your answer is correct by simply clicking on 'correct', 'almost' or 'wrong'.



To add your own question, press the plus sign on the progress balk. If the progress bar no longer appears, you can make it visible again by moving your mouse to the bottom of the screen.



As soon as you click on it, you will be given the option to add question card (a multiple-choice question or an open question) or a discussion thread (=comment). Depending on how the teacher has set up the assignment, you may also need to leave comments. In the image below, all three options are shown for convenience, but note that only one of the three will appear once you select an option.



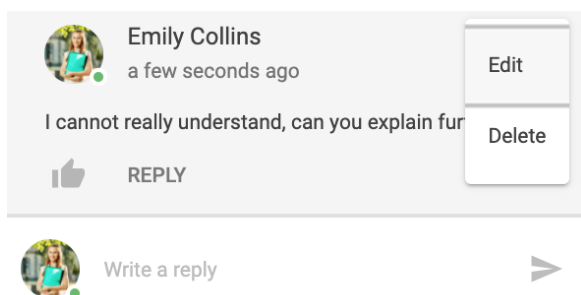
The first screenshot, 'Create multiple choice question', shows a form with a text box for the question, a checkbox for 'Use the checkbox to mark answers as correct', and two answer options. The second screenshot, 'Create open question', shows a form with a text box for the question and a section for the correct answer. The third screenshot, 'New comment', shows a form with a text box for the comment and a 'PUBLISH' button.

Type your question or comment in the text box and press 'publish' to send it. The teacher and the other students can then view the question or comment.

5. The Social & Summary Bar

On the right side, you will find a fold-out menu bar with various functions, most of which have also been mentioned earlier in this guide. By default, comments and questions are sorted by location (1). You can also choose to sort them by the date and time they were added, by the number of likes, or by the number of comments (2). In addition, you can also respond to comments or like certain questions (3). If you click on one of the questions in the list or at the bottom of the video player (on the progressbar), you can see the questions again. If you have already answered the question, you will see your answer and the correct answer appear (4). If you haven't answered the question yet, you'll be given the option to do it and send your answer(5).

You can still adjust your own answer by pressing the three dots in the top right corner and then choosing 'edit'. If you want to delete your answer, click 'delete' here.



The screenshot shows a comment by Emily Collins, posted 'a few seconds ago'. The comment text is 'I cannot really understand, can you explain fur'. Below the comment is a 'REPLY' button. To the right of the comment is a menu with 'Edit' and 'Delete' options. Below the comment is a 'Write a reply' form with a 'Write a reply' button and a right arrow.

The screenshots illustrate the FeedbackFruits interface:

- Annotations (1):** A list of user comments and questions, sorted by location. It shows a comment by Liz Bennett and a question by Olivia Johnson.
- Annotations (2):** A list of user comments and questions, sorted by latest activity. It shows a comment by Liz Bennett and a question by Olivia Johnson.
- Annotations (3):** A detailed view of a comment by Connor Murphy and a question by Donald Cook.
- Practice question (4):** A multiple-choice question: "What example does the presenter use for showcasing shapes?" with options: A cat, A dog, and A giraffe. The correct answer is A cat.
- Practice question (5):** A multiple-choice question: "Which of the following topics is discussed here?" with options: A Online education, B Education in the future, and C Improvements in education. The correct answer is B Education in the future.

6. Track progress

In the bar at the top of the assignment you will see an overview of your progress. You can see here how far you are with the assignment and how many elements you still need to complete to get a full grade.

The progress bar shows:

- Your progress
- 75.6% of grade still available
- 28m31s left


By clicking on the progress icons, you can see how many discussions and questions you can still respond to get a full grade.

The "Join in-video discussions" screen shows the following progress:

- Participated in **2 out of 9** discussions started by teachers
- Posted **2 out of 3** required replies on discussions
- Started **0 out of 2** required discussions


At the bottom, it shows:

- 4.4% of grade earned
- 55.6% of grade available




Answer in-video questions

Progress



Answered **1 out of 2** questions



★ 10% of grade earned

★ 20% of grade available

▼