



Universiteit Utrecht

Feedback Fruits – Interactive Video

Teacher manual

teachingsupport@uu.nl

Last edited on: 01-12-2021

Table of Contents

1. Introduction Interactive Video.....	3
2. Account.....	4
3. Setting Up Interactive Video	4
4. Monitor the assignment.....	9
5. Student perspective	10
6. Contact	16

1. Introduction Interactive Video

The Interactive Video plug-in of Feedback Fruits allows teachers to let students watch videos with more interaction. When students need to watch a video, so-called *question cards & discussion threads* can be added to the video. Question cards are questions that the student must answer while watching the video. When the video is at the selected time of the practice question, the student must first answer the question before the video can be viewed further. When the video is at the selected time of the discussion threads, the student will see your discussion threads. In this way, it can be indicated which part of the video needs extra attention or you can give the student instructions. Then the video will resume.

This guide introduces the use of the Interactive Video plug-in and functions as a reference for the further use of the plug-in. In addition, Educate-it also likes to offer didactic and practical support when using Interactive Video. Please feel free to contact the Educate-it desk via teachingsupport@uu.nl.

2. Account

Please contact the Educate-it desk if you want to use Interactive Video. This can be done by filling in the application form: <https://educate-it.uu.nl/contact-informatie-formulier-tools/>. The feedback fruits tool coordinator will then contact you as soon as possible to discuss the necessary information.

3. Setting Up Interactive Video

When you have added the plugin to Blackboard and open it, you will see the following screen:

Title of my Interactive Video

Need help setting up?

Support is always here to help you set up successful courses

HELP CENTER CHAT WITH SUPPORT

USE COPY OF EXISTING ▼

1 Video

Drop your video
(Like a MP4, MPG, WMV, or some other file)

or

CHOOSE VIDEO

or

Paste link SUBMIT

+ More modules available after uploading video

If you want to use an existing Interactive Video of yourself or a colleague, click on 'use copy of existing'. A copy of this existing assignment will be made, in which all *teacher contributions* will be copied. *Student contributions* are not copied.

If you want to create a new assignment, start by filling in the title. Blackboard automatically copies the title you entered when you created the plugin to this command. To upload a video, you can either drag a video to the "Video" box or select a video via "Choose Video." If the video can be found online, copy the link to the video and paste it to 'Paste Link'. This online video must then be publicly accessible (for example, a YouTube video).

After uploading the video, you can start adjusting. Click on 'open video' to watch the video and to add question cards and discussion threads. If you want to replace the video for another video, click change

The screenshot displays the 'Interactive Video' interface. At the top, a red circle with the number '1' is next to the word 'Video'. A 'CHANGE FILE' button is in the top right corner. The video player shows a soccer player in a blue and red striped jersey, with the FC Barcelona crest and Juventus logo visible. Overlaid on the video are three buttons: a red 'OPEN VIDEO' button, a blue 'TROFEU JOAN GAMPER' button, and an orange 'HIGHLIGHTS' button. Below the video player is a 'Settings' section with an upward arrow icon. The settings include: 'Allow students to view the original link' (toggle on), 'Separate contributions per group' (toggle off, with an info icon and text: 'Each group only see annotations by the teacher and contributions from their own groups. As a teacher you can see everything'), 'Student contributions' (section header), 'Students are allowed to post discussion threads' (toggle on), 'Students are allowed to post question cards' (toggle off), 'Students contribute anonymously' (toggle off, with an info icon), and 'Deadlines & realtime control' (toggle off, with a timeline icon and text: 'Decide when students start and stop having access, even during class').

Add question cards & discussion threads

When you have uploaded a video, click 'open video' to watch it and to add question cards & discussion threads. Click the appropriate time frame in the video to connect a question cards & discussion threads to this piece in the video.

Question cards can be used for practice and can be added by the teacher as well as by the student (see 'settings').

A choice must be made between open or multiple-choice questions.

In the case of multiple choice, the correct answer must be selected.

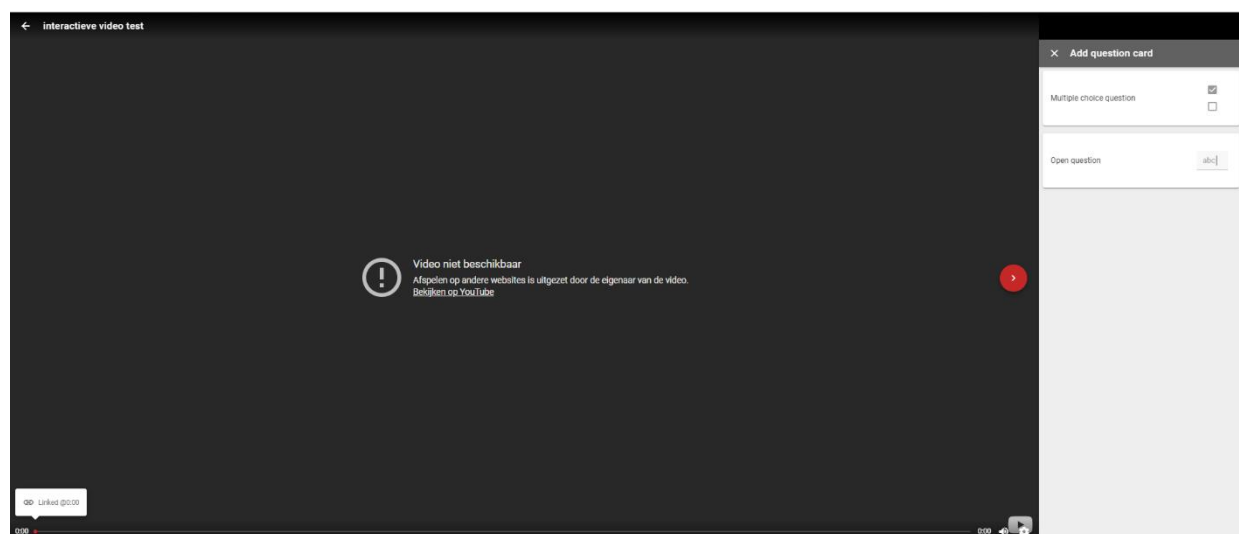
Discussion threads can be questions or discussion points and can be added by the teacher as well as by the student. Students (and teachers) can re-respond to each other's threads, allowing discussion with the video.

There are two ways to see a question cards of discussion threads: 1) click on the dot/ speech bubble on/above the timeline of the video or 2) click on the *preview* (the < sign) on the right side of the video to see an overview of the question cards and discussion threads and select one.

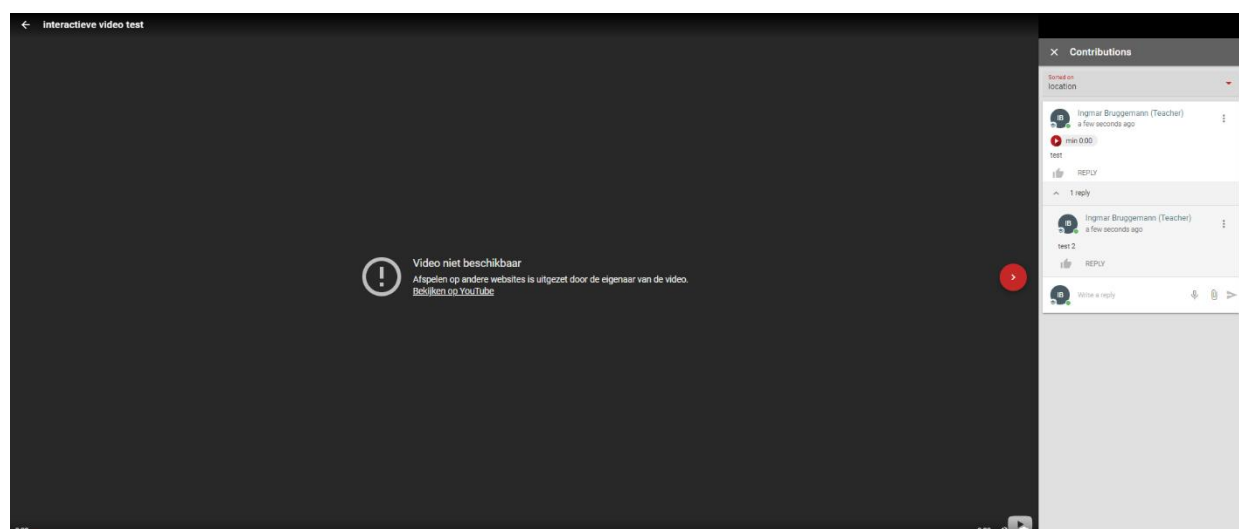
For multiple choice questions, you can see the distribution of the answers. The check mark next to an answer indicates that you have marked that question as correct.

For open-ended questions, you'll see a list of the answers the students have given. You can also see whether the student has labeled the answer as *correct*, *almost correct*, or *incorrect*.

Note: Next to the answers, you will see the names of the student in question. Students do not see that themselves, they only see a list of anonymized answers when you have set this up.



Click on 'X' in the upper right corner to return to an overview of all question cards and discussion threads that have been added to the file. You can sort this list by last activity, location, most *upvotes*, or most discussion threads. This way, you can sort the discussion threads based on what's relevant to you. For example, you can discuss the discussion threads that are most uplifted with your students.



When you open a discussion threads, you will see the discussion threads with all the comments. As a teacher, you can upvote the discussion threads and post a comment yourself.

Settings

Click on 'settings' to change the settings.

Allow students to view the original link.

The students will see the original link (URL) of the video.

Separate contributions per group

This option makes it possible to have students discuss the video in smaller groups. You can also choose to make the video accessible by group, instead of sharing the video with all students in the course.

After checking separate *annotations per group*, you must specify the groups. [See this article](#) to select appropriate groups for the Interactive Video. Can't select groups from Blackboard? [This article](#) explains how groups can be created using a CSV file.

Students only see the input of students within their own group. As a teacher, you can view the input of a specific group, or of all students. In the *Overall Student Progress* overview, you can view the statistics per group.

Student contributions

Students can post discussion threads

By default, students can comment on the video. Comments can stimulate interaction, but depending on your wishes, comments are not always desirable. For that reason, comments can be turned off.

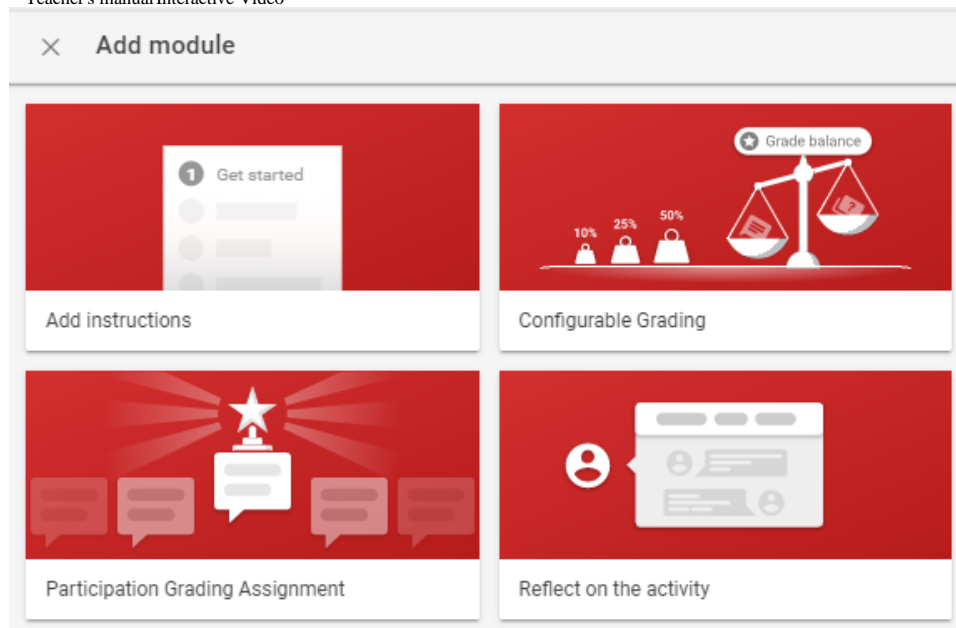
Students are allowed to post question cards

It is also possible to have students make question cards themselves; this is off by default. It can be an instructive experience if students must answer their own question cards and those of their fellow students.

When you let students create their own question cards, there is a new option: students can see the answers of their fellow students on question cards created by students. This option shows students anonymized answers from their fellow students after they have answered the question themselves.

Add modules

In the interactive video dashboard: click the plus button to add instructions to the command.



Add review

It is also possible to add a self-set assessment module by pressing the plus button. Here you can assess the students based on their participation (for example, attendance) and performance (for example, how they scored on the question cards). You can set how much a certain element weighs and the figure is automatically calculated based on the weighting. See photo below.

Grading (Close button: ✕)

Configure which facets of the activity should be weighed in the students grade.

100 %

50	pp	Viewed the video
23	pp	Answered all question cards placed by teachers
25	pp	Participated in all discussion threads started by teachers
1	pp	Has written the minimum number of replies on discussion threads: <input type="text" value="1"/>
1	pp	Has started the minimum number of discussion threads: <input type="text" value="1"/>

100 %

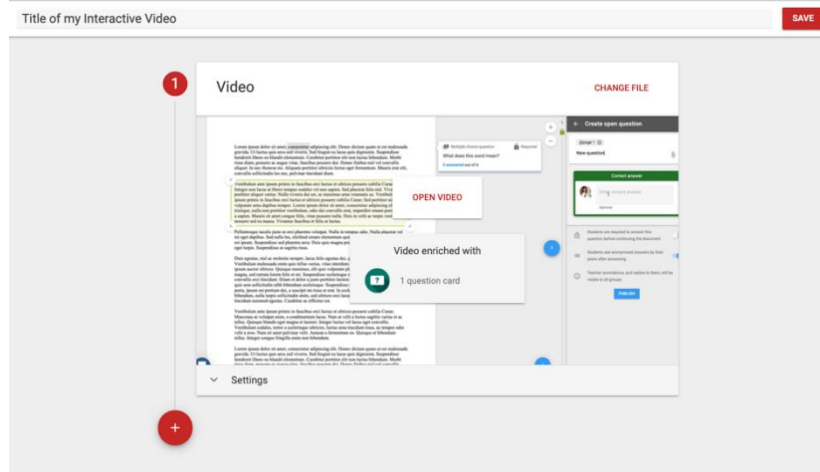
Settings
Grades are based on the factors selected above, not on grades for group work.

Time window

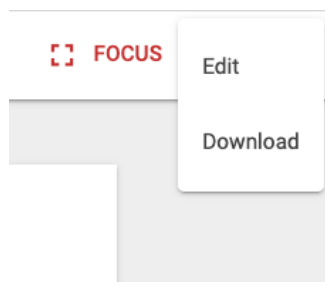
It is possible to add a start and end date to create a contribution to the assignment. This can be arranged under *Deadlines & Realtime Control*. More information can be found [here](#).

Publish the assignment

When you have everything set up correctly, you can press *publish* or save in the top right corner of the screen.



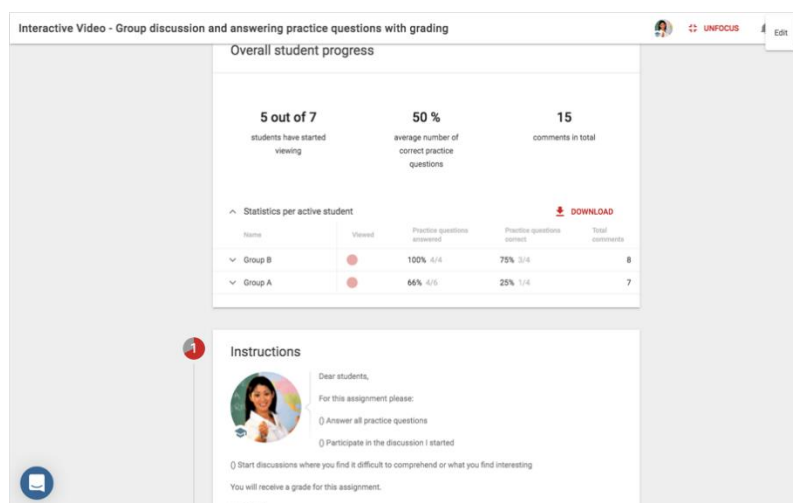
After publishing the video, you can click on the three dots in the upper right corner of the screen to change the command. For example, you can modify/replace the file, change the instructions, change the allowing of the video download, add question cards and add discussion threads. Here you can also download the video yourself, without question cards and discussion threads



You're Done Setting Up Your Interactive Video

4. Monitor the assignment

Now that the assignment is set up, you can keep an eye on the process of your students. This allows you to check their progress and view their comments and answers on question cards.



Student progress overview

When you open the assignment, you see *overall student progress*. This shows how many students have started watching, the average percentage of question cards that have been answered correctly and the total number of discussion threads. This gives you an insight into how the learning process is progressing.

Click the three dots in the top right corner to change or download the video or to go to the original video online.

Note: the downloaded video is without question cards and/or discussion threads.

Click on *statistics per active student* for a more detailed overview. In this overview you can see for each student whether they have started watching, marked themselves as complete, how many questions they have answered correctly and how many discussion threads they have posted.

Overall student progress

5 out of 7 students have started viewing	50 % average number of correct practice questions	15 comments in total
--	---	--------------------------------

Statistics per active student DOWNLOAD

Name	Viewed	Practice questions answered	Practice questions correct	Total comments
Group B		100% 4/4	75% 3/4	8
Olivia Johnson		100% 2/2	100% 2/2	4
Connor Murphy		100% 2/2	50% 1/2	4
Donald Cook				
Group A		66% 4/6	25% 1/4	7
Ash Fisher		100% 2/2	50% 1/2	3
Emily Collins		100% 2/2	0% 0/2	4
Liz Bennett		0% 0/2	0% 0/0	0
Karey Star				

5. Student perspective

How does Interactive Video work for a student?

Main

When you open the command, you'll see a preview of the video that's going to be watched. Depending on the assignment, you can also see an instruction the teacher has given. Read the instructions carefully and click start watching to watch the video.

Video

When watching the video, there are several things to look out for. A few basic features can be found at the top and bottom of the video.

The following icons, from left to right, let you minimize the video (unfocus); view original; mark the command as completed (Done); turn on the video upvoted (thumb) and notifications (Ringer).



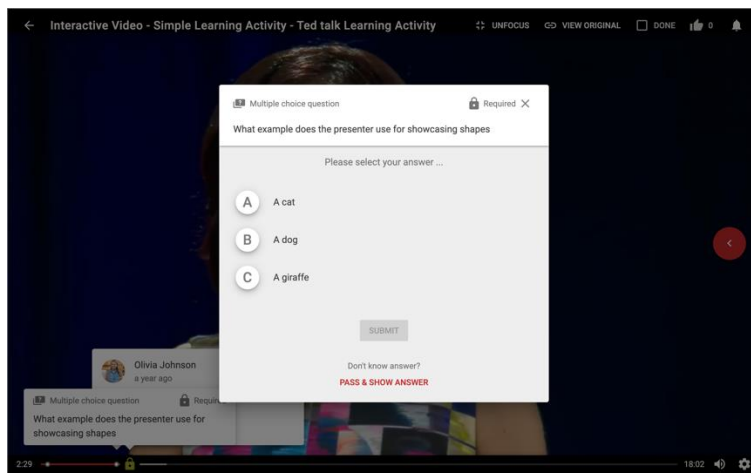
At the bottom, next to the timer, you will find the settings for subtitles, volume, and video speed.



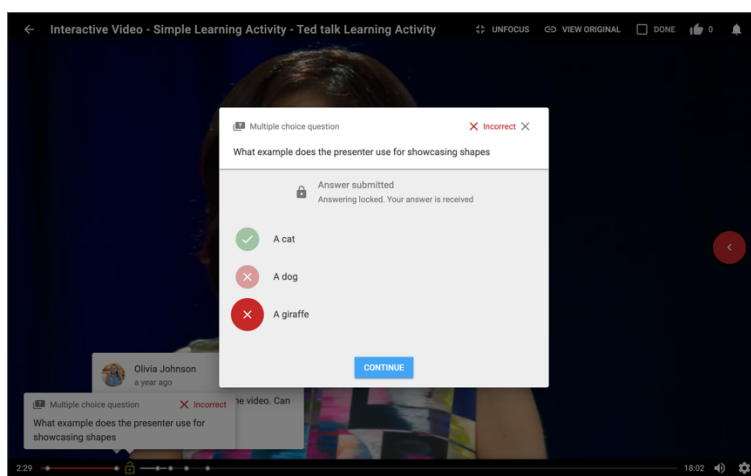
Ask

Questions, both open and multiple choice, can be added by your teacher. Sometimes it is not possible to continue watching the video without answering the questions. Questions can also be added by yourself or fellow students if the teacher allows it. You can click on the plus button for this.

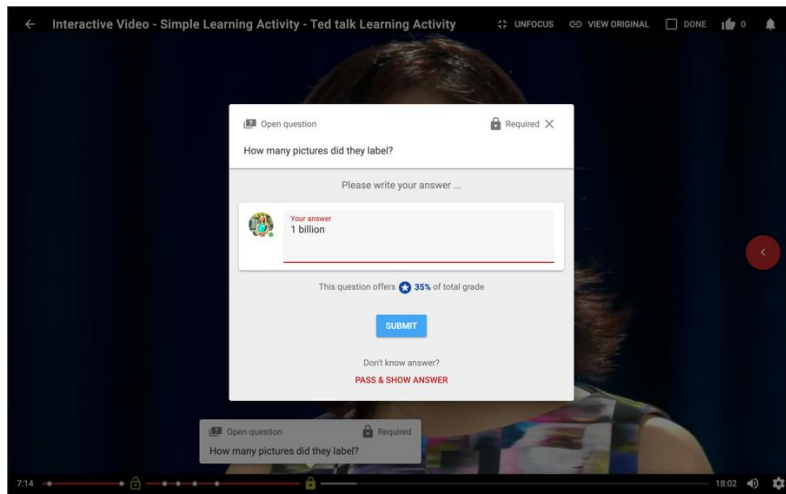
Below is a multiple-choice question at the beginning of the video, which must be completed to continue. On the timeline at the bottom you can see the questions. The questions with a lock are questions that need to be answered in order to continue watching the video. The white dots indicate a question that can be answered at any time.



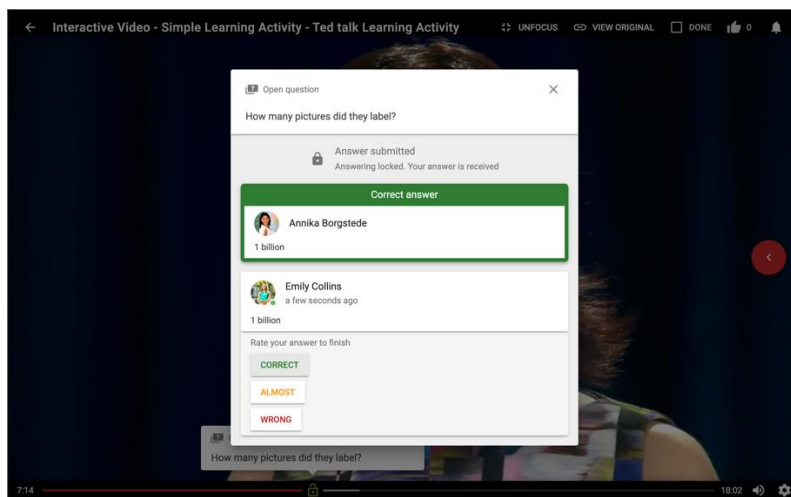
If a question has been answered, the correct answer may appear. This answer can also be viewed later in the video by clicking on the question in the timeline.



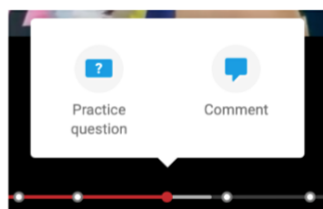
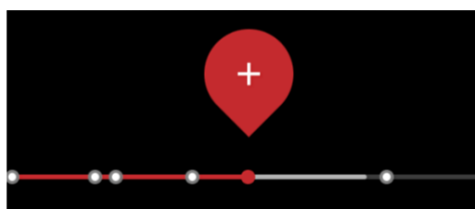
There may also be open-ended questions, such as the question below. This involves typing the answer into the text box. In some cases, you can select Pass & show answer if you don't know the answer. If the assignment is quantified, you will also see what percentage each question weighs.



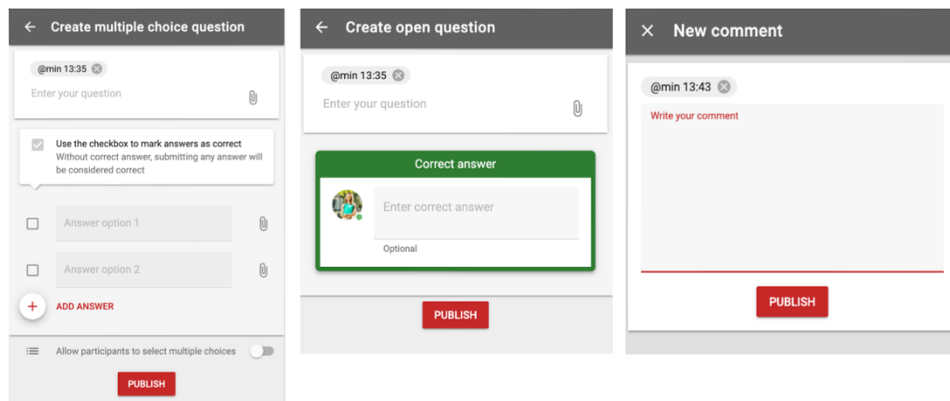
Once you have given an answer, the answer may appear. You can then also indicate whether you would label your own answer as correct, almost correct, or incorrect.



To add a question yourself, click the red and white plus button in the timeline of the video.

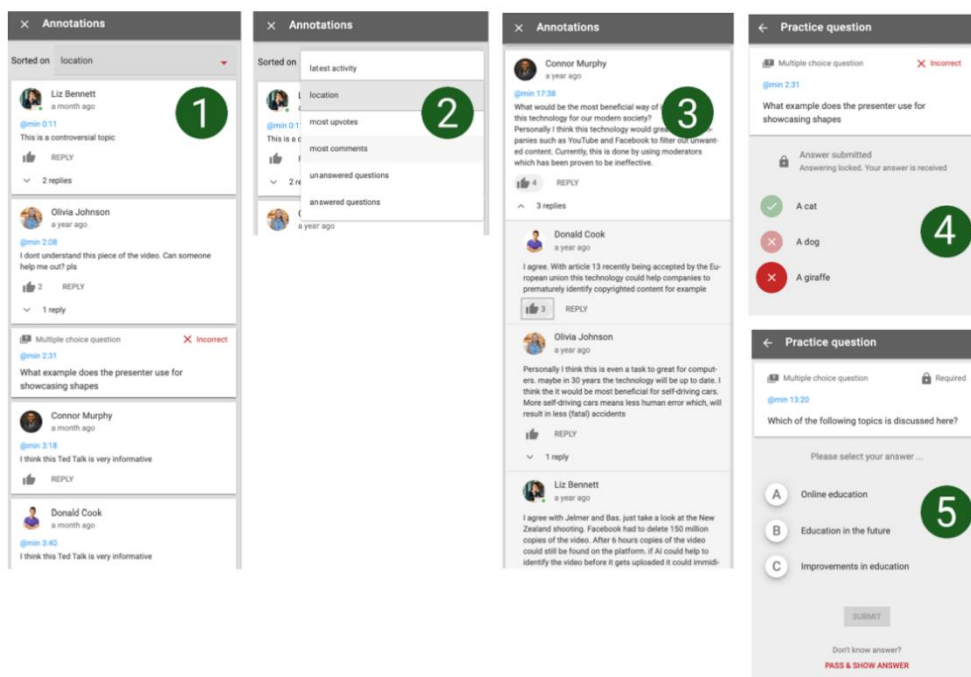


If you click on this, you can choose a multiple choice question, open-ended question or discussion threads, depending on the settings your teacher has chosen. You can only select one, but below is an example of all three options.

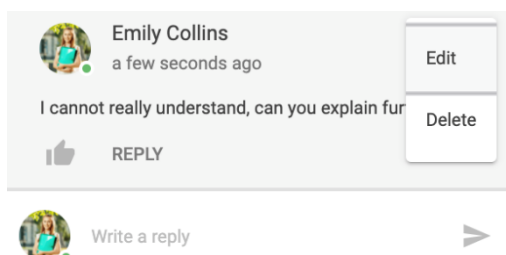


Social & Summary menu

As you may have seen, there's a collapsible menu on the right side of the screen. This has multiple functions, in addition to the options described earlier. This menu shows standard question cards and discussion threads per location (1). In addition, in this menu you can add discussion threads and upvoted question cards (2). Finally, when you click on questions in the list or in the video player, they will be placed here in the menu (3). If you have already answered the question, you will see the option you have chosen and the correct answer (4). If you didn't answer, you can choose an answer and submit it (5).

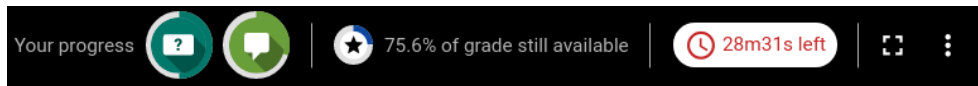


If you click on your own contribution, you can change or delete it by clicking on the 3 dots at the top right.

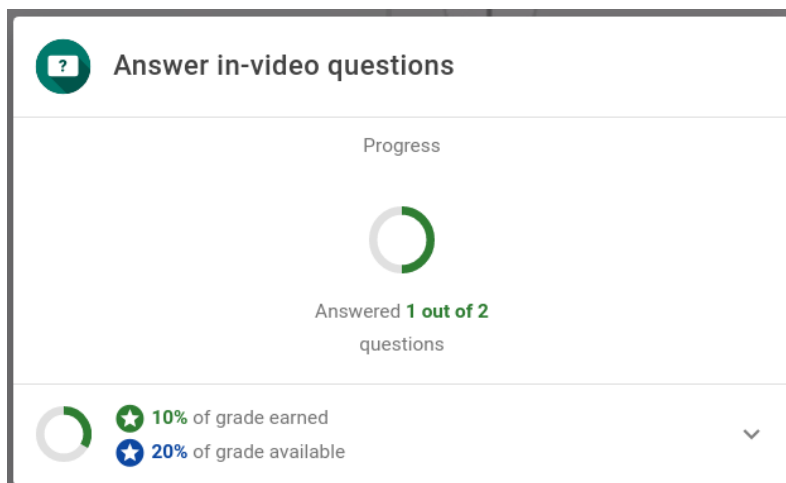
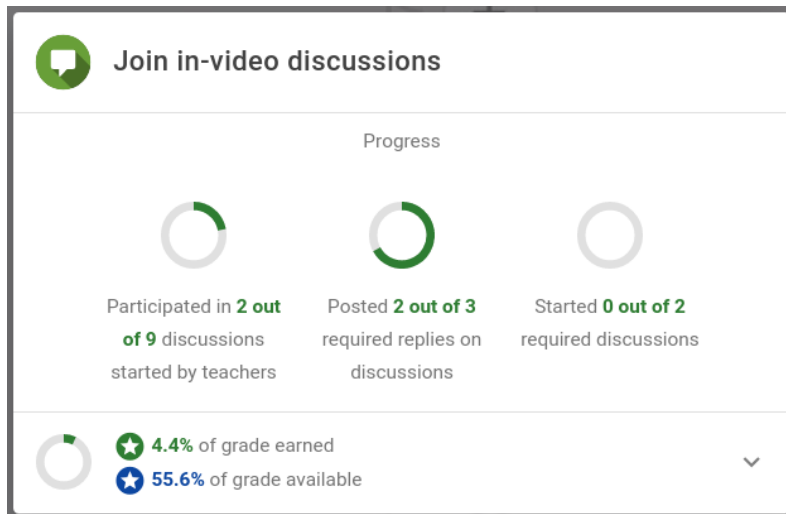


View your progress

At the top of the assignment, you can find an overview of your progress in the assignment and how many elements you still need to complete to get a full grade.



By clicking on the icons, you can see how many discussions and questions are still available to receive a grade.



6. Contact

Do you have questions or need support when using FeedbackFruits interactive video? Please contact us. Also, if you have any comments or questions about this manual, we would like to hear from you.

Practical support

Educate-it support desk

University Library Uithof, second floor, red desk

Opening hours: Every working day from 8.30 am - 5.00 pm

Phone: 030 253 2197

Email: teachingsupport@uu.nl

Website: <https://educate-it-uu.sites.uu.nl>